



MAKING HEARING A PRIORITY



DELIVERING GLP-COMPLIANT PRECLINICAL SERVICES TO SUPPORT YOUR AUDITORY RESEARCH PROGRAM

CBSET, a state-of-the-art GLP-compliant translational research institute, and CILcare, a premier CRO specializing in auditory science, collaborate to offer a broad range of cutting-edge preclinical services and regulatory support for the assessment of your products for auditory indications.

Based on extensive expertise in otology research, we provide fully customizable and comprehensive services to accelerate the development of device-mediated therapies, small molecules, biologics and therapeutic proteins, cell products, and gene therapies.



PROGRAM DEVELOPMENT AND DESIGN CAPABILITIES

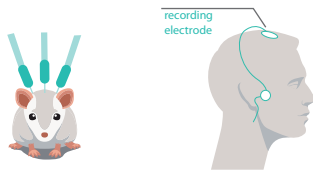
We offer a broad range of *ex vivo* and *in vivo* models, enabling studies from proof-of-concept and method development through fully GLP-compliant safety assessments as a part of a collaborative model of preclinical support.



AUDITORY ASSESSMENT EXPERTISE

NON-INVASIVE, TRANSLATIONAL FUNCTIONAL MEASURES

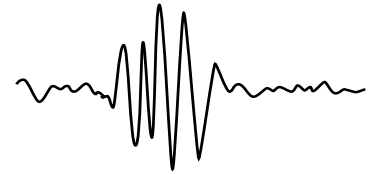
ABR (Auditory Brainstem Response)



DPOAE (Distortion Product Oto-Acoustic Emission)



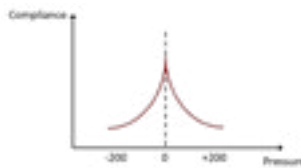
WAVE I ANALYSIS



OTOSCOPY



TYMPANOMETRY

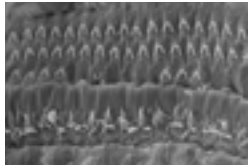


CT SCAN

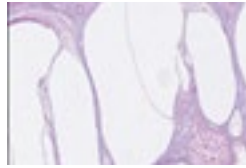


IMMUNOHISTOCHEMISTRY & HISTOPATHOLOGY

SEM



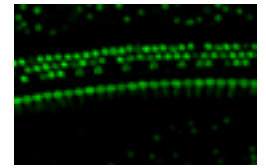
HISTOLOGY



RIBBON SYNAPSES



COCHLEOGRAM



SURGICAL PROCEDURES

- Cochleostomy
- Canalostomy
- Round window injection
- Transtympanic injection
- Intrabullar injection
- Cochlear implant

SPECIFIC SAMPLINGS

- Perilymph
- Tympanic bulla
- Cerebrospinal fluid

COCHLEAR EXPLANTS

- Organ of Corti dissection
- Explant culture
- Immunostaining and microscopy

PARTNERING TO MAKE HEARING A PRIORITY

ABOUT CBSET

CBSET is a translational research institute providing high quality collaborative GLP studies from proof-of-concept through regulatory filing, to IND-enabling GLP studies:

- Full preclinical programs, plus specific study design supporting a range of applications in therapeutic and device development
- OLAW-assured, AAALAC-accredited animal research facilities

CBSET is established in Lexington, MA (USA).

ABOUT CILcare

CILcare is the world's leading CRO specializing in the development of novel therapies for ear disorders. The company offers a range of services to assess the efficacy, safety, and exposure of drug candidates and medical devices on preclinical models for:

- Hearing loss
- Tinnitus
- Otitis
- Ototoxicity

CILcare is based in Montpellier and Paris (France), and Boston, MA (USA).



www.cbset.org



www.cilcare.com