

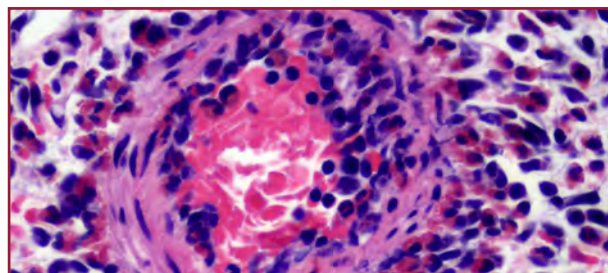
## GLP PRECLINICAL SERVICES

CBSET is a multidisciplinary, not-for-profit research institute that supports a range of applications in therapeutic and device development, with OLAW-assured, AAALAC-accredited animal research facilities and GLP-compliant analyses. We can design full preclinical programs or specific study designs using the optimal model systems, specimen types, and project methods to achieve your scientific, regulatory and commercial goals.



### Device Testing

- Small and large animal / chronic GLP studies
- Combination products
- Efficacy and model development
- Medical imaging (angiography, CT, OCT, IVUS, TTE, TEE, ICE, fluoroscopy)
- Surgical, interventional, and catheterization procedures
- 3D modeling, benchtop and *ex vivo* testing



### Histopathology & Morphometry

- Tissue and slide processing
- Plastic resin embedding
- Primary staining (paraffin, resin, frozen) and molecular pathology (IHC, IFA, ISH)
- Digital imaging, quantitative analysis, electron microscopy, and mechanical testing
- Pathologist assessment



### Drug & Cell-Based Therapies

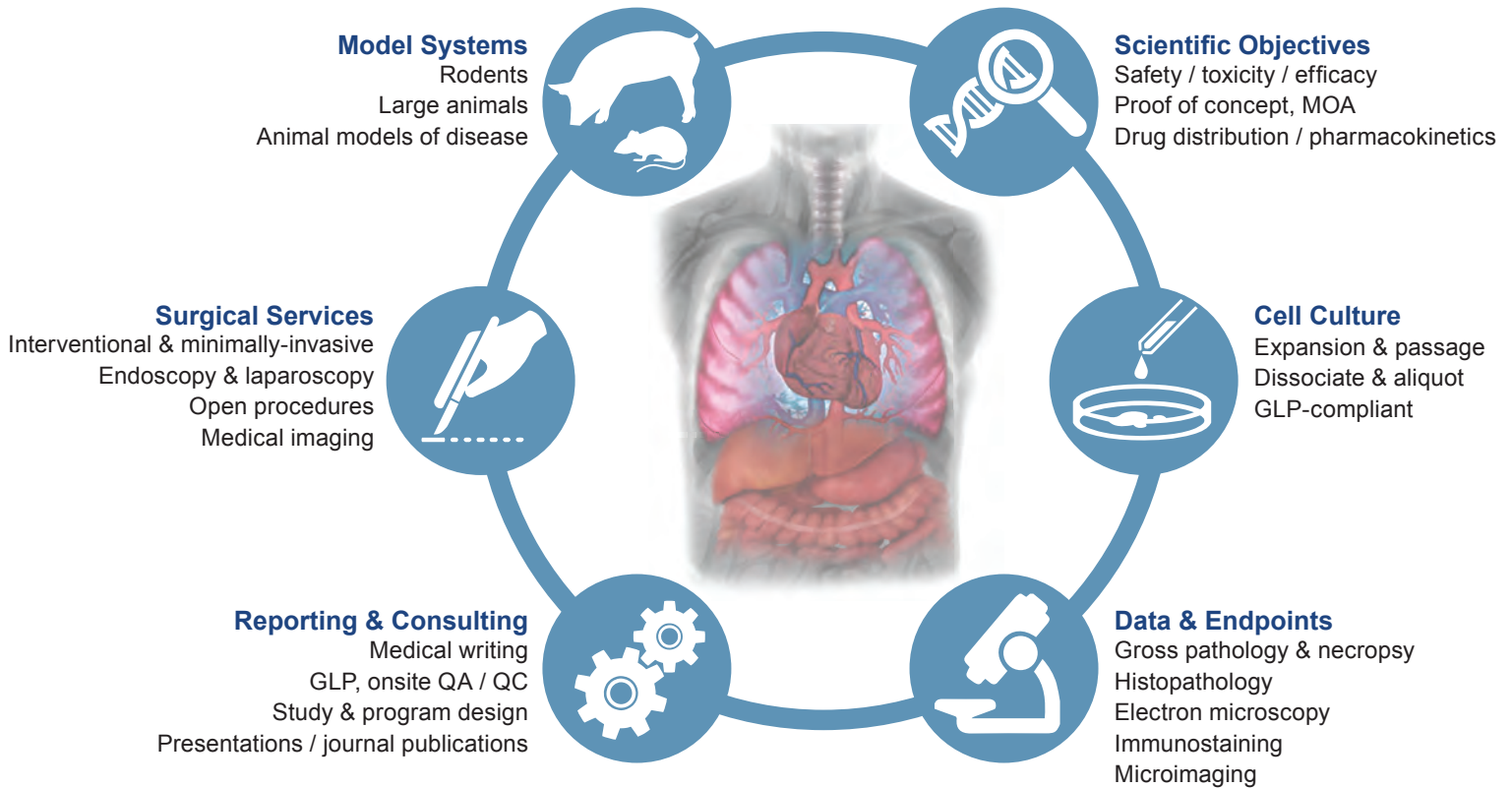
- Efficacy, safety, and regulatory strategy
- Tumorigenicity and cell persistence
- Complex pathologies
- Translatability / model development and delivery paradigms



### Education & Training

- Physician training
- Academic collaboration
- Reporting and regulatory consulting
- Publication and conference presentations

# CBSET's Integrated Preclinical Research Platform



## ABOUT CBSET

CBSET is a state-of-the-art biomedical research institute located in Lexington MA.

Our mission is to advance biomedical research through innovative, high-quality services. We combine top-tier research with operational expertise. Since our inception, CBSET has continued to develop technical and scientific acumen through collaborative projects in the medical device, pharmaceutical and academic communities. Our 40,000 square foot, GLP-compliant, AAALAC-accredited facility includes vivaria, procedure rooms, catheterization / imaging labs, surgical and necropsy suites, histopathology, SEM, and a range of other technologies.

## Why CBSET?

- **Credibility.** We are recognized as unbiased experts, bringing independent credibility to your regulatory filings.
- **Culture.** Our culture is science rather than commerce; we value new models and creative collaboration.
- **Mission.** As a 501(c)(3), non-profit corporation, our motivation is to enable your success; your product is our mission.
- **Integrated resource.** Our multidisciplinary team includes board-certified veterinary, quality, biological and quantitative sciences expertise, as well as board-certified pathologists – all in one facility.

## CBSET, Inc.

500 Shire Way, Lexington, MA 02421 USA

+1 781 541 5555

info@cbset.org

www.cbset.org

