

CARDIOVASCULAR RESEARCH

Pioneering Expertise in Cardiovascular Research

CBSET was founded by renowned experts in cardiovascular research, with expertise in performing GLP-compliant preclinical procedures.

Common test articles and techniques include:

- Vascular closure devices
- OCT/IVUS/echocardiography imaging
- Cell-based vascular therapies
- Coronary and peripheral stents
- Drug-coated balloon / catheters
- Vascular grafts / stent grafts
- Aneurysm, clots and thrombectomy models
- Local drug delivery systems
- Transcatheter heart valves
- Filters
- Valvoplasties
- Heart failure

Interventional Procedures

Interventional cardiology has been a core competency since our inception. Cardiac catheterization lab includes a fixed-panel GE Innova 2100 fluoroscope with 3D imaging capability, and our staff with decades of experience in performing device evaluations. Imaging capabilities enable the visualization and quantification of device placement and flow properties.

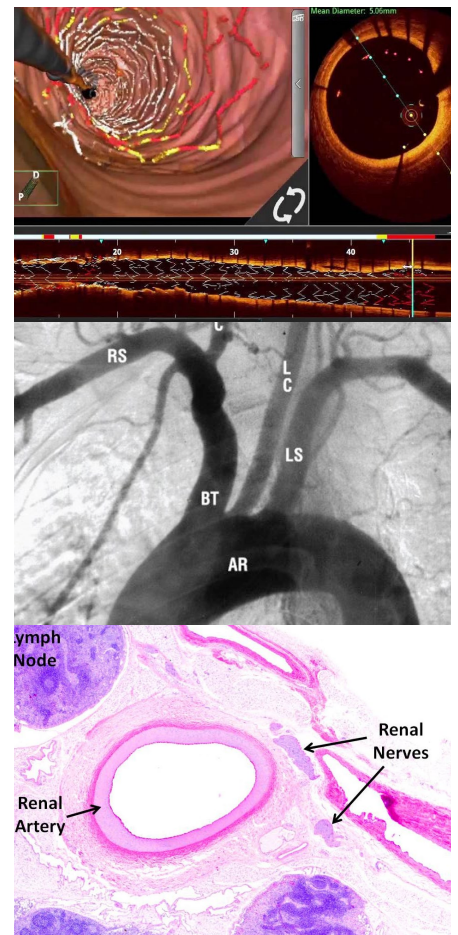
Catheter-based Ablation

We are pioneers in catheter-based ablation therapies, having tested sonic and RF ablation devices in a range of minimally invasive approaches, such as:

- Programmed electrical stimulation (PES) or cryoballoons are used to target specific cells of the heart that are the source of irregular electrical pulses which cause atrial fibrillation (AF).
- Denervation therapies (RDN) selectively ablate sympathetic nerves of the kidney to modulate hypertension.

Comprehensive Tissue Assessment

- Localized drug delivery
- Histopathology, IHC, immunofluorescence
- Biomarker, morphometry and quantitative analysis
- Computational (3-D) modeling



ABOUT CBSET

CBSET is a state-of-the-art biomedical research institute located in Lexington MA.

Our mission is to advance biomedical research, through innovative, high-quality services. We combine top-tier research with operational expertise. Since our inception, CBSET has continued to develop technical and scientific acumen through collaborative projects in the medical device, pharmaceutical and academic communities. Our 40,000 square foot, GLP-compliant, AAALAC-accredited facility includes vivaria, procedure rooms, catheterization / imaging labs, surgical and necropsy suites, histopathology, SEM, and a range of other technologies.

Why CBSET?

- **Credibility.** We are recognized as unbiased experts, bringing independent credibility to your regulatory filings.
- **Culture.** Our culture is science rather than commerce; we welcome unprecedented models and creative collaboration.
- **Mission.** As a 501(c)(3), non-profit corporation, our motivation is to enable your success; your product is our mission.
- **Integrated resource.** Our multidisciplinary team includes board-certified veterinary, quality, biological and quantitative sciences expertise, as well as board-certified pathologists – all in one facility.

CBSET, Inc.
500 Shire Way
Lexington, MA 02421 USA
+1 781 541 5555
info@cbset.org
www.cbset.org

Regulatory Review with a Credible Partner

CBSET is an ideal partner in preparing, presenting, and defending your GLP studies for regulatory review. Our status as a non-profit, 501(c)(3) institute and long track record of safety assessments gives collaborations impeccable credibility..

- Audited GLP-compliant large animal facilities (USDA, FDA)
- Operational compliance and animal welfare accreditation - GLP, OLAW, AAALAC
- Animal sciences – 2 full-time ACLAM-certified DVM
- Experts in safety assessment – 2 full-time boarded veterinary pathologists (DACVP)

Research Spotlight: Cardiovascular Research Resources

